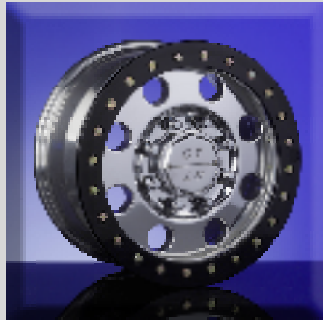
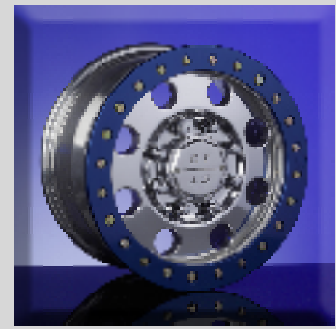
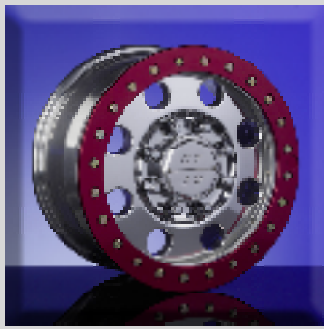


Beadlock Wheel Mounting Instructions



Caution!!!

Read these instructions thoroughly before mounting tires.

1. Tires should be mounted only according to good tire mounting practices, using only acceptable mounting equipment specifically designed for the tire industry.
2. Before mounting the tire, lubricate the bead lock bolts with anti-seize compound, to prevent gauling the threads.
3. Seat the tire bead in the shoulder area of the bead lock inner ring on the wheel.
4. Place the outer ring on, and tighten the bolts in a cross pattern to ensure even pressure on the outer bead lock ring. Make sure the outer ring is centered, and even with the inner ring.

MAXIMUM TORQUE 20-22 Ft. Lbs. on the bead lock 5/16" bolts.

5. The outer ring will flex to match the tire bead and should pull down to meet the inner ring.
6. Impact wrenches are not recommended for installing bolts due to the possibility of over or under tightening. All bolts should be started by hand to avoid cross-threading.
7. Use tire mounting liquid on the wheel bead seat only, and not on the bead lock portion of the wheel. This will ensure that the tire mounts on the wheel bead seat properly.
8. Bead locks are designed to be used in tubeless applications but can be used in conjunction with inner tubes if necessary.